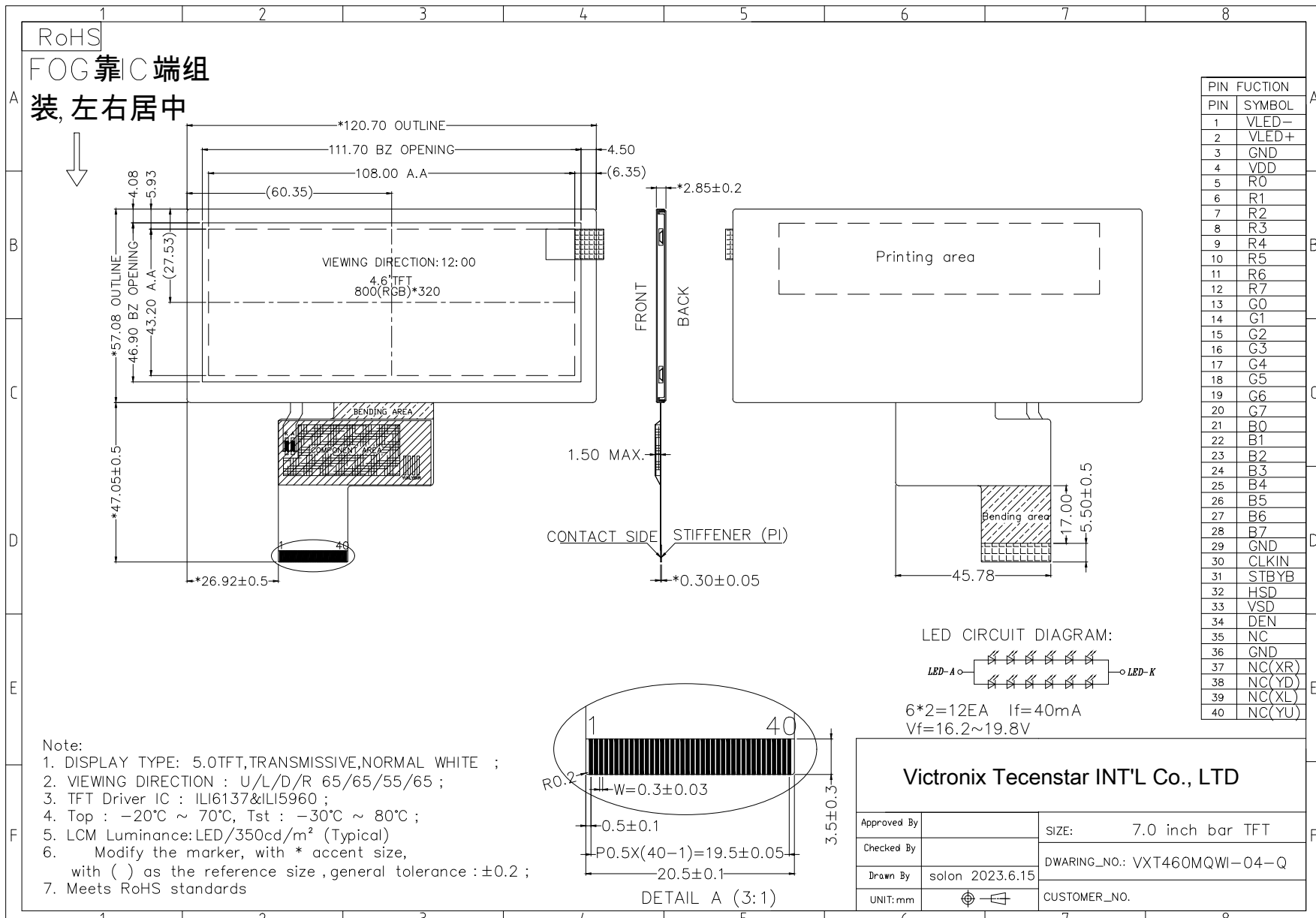


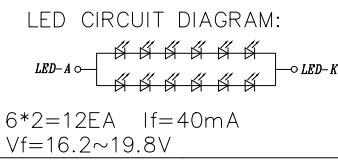
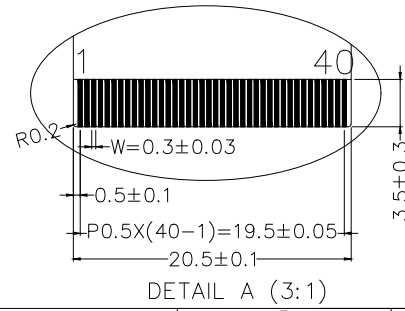
RoHS

FOG 靠 C 端组  
装, 左右居中



PIN FUCTION	
PIN	SYMBOL
1	VLED-
2	VLED+
3	GND
4	VDD
5	R0
6	R1
7	R2
8	R3
9	R4
10	R5
11	R6
12	R7
13	G0
14	G1
15	G2
16	G3
17	G4
18	G5
19	G6
20	G7
21	B0
22	B1
23	B2
24	B3
25	B4
26	B5
27	B6
28	B7
29	GND
30	CLKIN
31	STBYB
32	HSD
33	VSD
34	DEN
35	NC
36	GND
37	NC(XR)
38	NC(YD)
39	NC(XL)
40	NC(YU)

- Note:
1. DISPLAY TYPE: 5.0TFT, TRANSMISSIVE, NORMAL WHITE ;
  2. VIEWING DIRECTION : U/L/D/R 65/65/55/65 ;
  3. TFT Driver IC : ILI6137&ILI5960 ;
  4. Top : -20°C ~ 70°C, Tst : -30°C ~ 80°C ;
  5. LCM Luminance: LED/350cd/m<sup>2</sup> (Typical)
  6. Modify the marker, with \* accent size, with ( ) as the reference size , general tolerance : ±0.2 ;
  7. Meets RoHS standards



**Victronix Tecenstar INT'L Co., LTD**

Approved By		SIZE: 7.0 inch bar TFT
Checked By		DWARING_NO.: VXT460MQWI-04-Q
Drawn By	solon 2023.6.15	CUSTOMER_NO.
UNIT:mm		